

[view in browser](#)

The ONEPlanET Newsletter - April 2026

6th - Edition

Dear Stakeholder,

As conversations around climate change, sustainability, and development continue to evolve, one thing is becoming clearer than ever: the way we manage our water, energy, and food systems matters deeply to our shared future. At ONEPlanET, we see every workshop, tool, and collaboration as part of a growing movement toward practical solutions that put people and communities at the centre.

In this 6th Edition, we take you through some of the exciting highlights from the past months, from hands-on hackathons and capacity-building programmes to innovation workshops, assemblies, and climate adaptation initiatives. We also highlight new resources and tools you should check and try out, insights, and upcoming events that continue to shape how we approach the Water-Energy-Food-Ecosystems (WEFE) Nexus across Africa and Europe.

We hope you enjoy this edition and find inspiration in the progress that has been achieved thus far.

[Reflecting on the ONEPlanET Hackathon: Four Days of Innovation for a Sustainable Future. Hybrid - Nairobi, Kenya – March – July 2025](#)

[Subscribe](#)[Past Issues](#)[Translate](#) ▼

In March 2025, ONEPlanET hosted a transformative four-day Hackathon at Strathmore University, uniting researchers, entrepreneurs, and policymakers to tackle Africa's Water, Energy, and Food (WEF) challenges.

Participants utilized the ONESim and ONEPlay toolkits to simulate real-world trade-offs and develop evidence-based policy solutions for Kenya's resource landscape. This milestone demonstrated how interdisciplinary collaboration and local expertise can bridge socio-economic gaps through practical, scalable innovation.

A huge thank you to our partners, CARTIF, Three o'clock, The Cyprus Institute, Strathmore University, and AfriLabs, and all the mentors who helped strengthen the foundation for a sustainable future

[Learn More](#)

[Launch of the WEF Transitional Living Labs in Cyprus, Cyprus – June 2025](#)

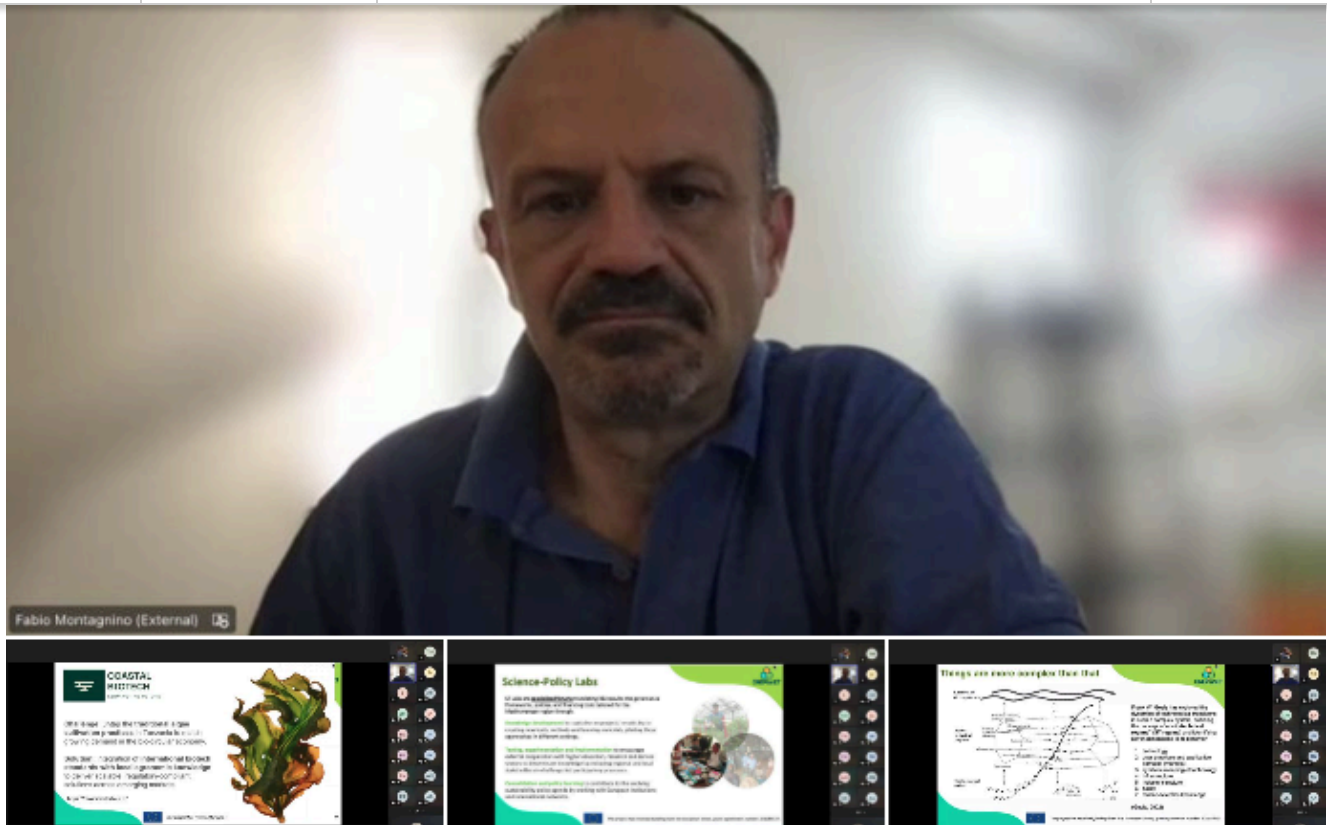
[Subscribe](#)[Past Issues](#)[Translate ▼](#)

ONEPlanET recently reached a major milestone in establishing Africa's first Water–Energy–Food (WEF) Living Lab. Through strategic sessions, partners defined the Lab's mission and vision, ensuring it serves as a powerhouse for cross-sector collaboration.

A highlight of the convening was a World Café session led by Esti Sanvicente, which integrated hackathon-driven innovation into the Lab's long-term design. Using the Quintuple Helix approach, the team finalized action plans for inclusive governance and operational excellence. The event concluded with a cultural exchange in Nicosia, solidifying the partnerships necessary for driving systemic change.

[Learn More](#)

Academia Meets Practice: Innovations within the WEF Nexus Webinar, virtual – July 2025

[Subscribe](#)[Past Issues](#)[Translate ▼](#)

Last year, ONEPlanET convened researchers, innovators, and investors from across the continent for a focused conversation on advancing practical solutions within the Water, Energy, and Food Nexus.

During the webinar, we explored how research can move beyond theory into scalable, real world impact. Discussions centered on translating academic insights into market ready solutions, strengthening collaboration between universities and industry, and building the capacity required to drive sustainable innovation.

The session reinforced a clear message: integrated WEF solutions are essential to addressing food security, energy access, and climate resilience across Africa. Turning research into action remains at the heart of ONEPlanET's mission to enable meaningful, systems level change.

[Learn More](#)

WEF Nexus Innovation Workshop: Collaborating for Change

ONEPlanET convened the WEF Nexus Innovation Workshop themed Collaborating for Change, bringing together experts and stakeholders to address the interconnected challenges shaping water, energy, and food systems.

studies that demonstrated how integrated WEF approaches can drive sustainable and scalable solutions.

The workshop reinforced ONEPlanET's commitment to collaboration, knowledge sharing, and advancing systems thinking to support resilient WEF solutions across diverse contexts.

[Learn More](#)

ONEPlanET winter school, virtual – August 2025

ONEPlanET co-hosted the WEF Nexus Winter School, an event focused on advancing Water-Energy-Food (WEF) Nexus thinking, providing participants with practical skills and real-world applications.

Throughout the program, attendees had the opportunity to:

- Deepen their understanding of the WEF Nexus approach, exploring its significance in addressing interconnected global challenges.
- Learn how to connect WEF Nexus concepts to critical global issues such as climate change and the Sustainable Development Goals (SDGs).
- Gain hands-on experience with tools designed to analyze WEF interactions and develop effective policies for sustainable resource management.

The Winter School served as a platform for participants to explore how ONEPlanET is driving sustainable practices and fostering collaboration among stakeholders in the WEF Nexus domain.

[Learn More](#)

Policy and Civil Society Synergy: Enabling Frameworks for Sustainable WEF solutions, Virtual – September 2025

Subscribe

Past Issues

Translate ▼



On 17 September 2025, ONEPlanET hosted a high-level virtual dialogue, “Policy and Civil Society Synergy: Enabling Frameworks for Sustainable WEF Solutions.” The event brought together policymakers, practitioners, and civil society leaders to discuss how integrated policy design can bridge the gap between national strategy and grassroots reality. From breaking down sectoral silos to ensuring that women, youth, and rural communities have a seat at the decision-making table, the conversation emphasized that Africa’s resilience depends on Water–Energy–Food (WEF) systems that are as inclusive as they are innovative.

Key Takeaways:

- **Integrated Design:** Moving beyond fragmented approaches to enable coordinated resource management.
- **Grassroots Impact:** How local leadership and lived experiences are successfully shaping national policies.
- **Inclusive Governance:** The critical role of representation in building equitable and sustainable frameworks

[Read the full event recap and insights here](#)

ONEPlanET at NEST- LEAP 2025 | Genova, Italy – September 2025



Last year, ONEPlanET participated in the NEST-LEAP event hosted by the Polytechnic School of the Università degli Studi di Genova, focused on advancing clean energy technologies.

ONEPlanET was represented by Brenda Insonne from RINA and Massimo Rivarolo from Università degli Studi di Genova, with Dr. Chiara Anfosso also in attendance.

At the event, we presented a poster alongside a showcase on the evaluation of water–energy–food intensity for e-fuels and green fertilizer synthesis in South Africa, highlighting how integrated research can inform sustainable pathways for Africa’s energy transition.

Participation in forums like NEST-LEAP strengthens ONEPlanET’s mission to empower African policymakers, researchers, investors, and communities with tools and knowledge for clean energy generation and sustainable resource use, while addressing inequalities and socio-economic gaps.

[Read More](#)

ONEPlanET General Assembly 2025 | Praia, Cabo Verde and Online – October 2025

Subscribe

Past Issues

Translate ▾



In October 2025, the ONEPlanET General Assembly convened in Praia, Cabo Verde, bringing together African and European partners to synchronize efforts on the Water–Energy–Food (WEF) Nexus. The gathering served as a critical pulse check on project milestones and a forum for strengthening cross-regional cooperation.

A featured public hybrid event showcased the project’s flagship open-access tools, including the ONESim and ONEPlay simulation platforms and the ONEPlanET Knowledge Hub. These resources are now actively empowering policymakers and researchers to make evidence-based decisions for clean energy transitions and sustainable resource management across the continent.

Learn More

The Climate Adaptation Sprint in Cabo Verde – October 2025

Climate Adaptation Sprint

A workshop to engage dialogue and empower communities.

Identify local climate risks and solutions

How can we respond? Mitigation vs. Adaptation

- Mitigation**
 - 1. Reducing the drivers – Reducing greenhouse gas emissions
 - 2. Switching to clean energy
 - 3. Improving energy efficiency
- Adaptation**
 - 1. Dealing with the effects of climate change
 - 2. Building resilience in infrastructure
 - 3. Public education and awareness

[Subscribe](#)[Past Issues](#)[Translate ▼](#)

Praia. This hands-on workshop brought together 30 postgraduate students from the University of Cabo Verde and professionals from ECREEE to tackle the acute climate risks facing island nations.

Participants used local climate data to co-create a tailored adaptation strategy for Praia, addressing critical threats like saltwater intrusion, coastal erosion, and flood risks. By focusing on practical measures for water management and food security, the Sprint transformed systems thinking into a roadmap for local resilience.

This initiative underscores ONEPlanET's mission: turning climate research into inclusive, community-driven action to protect Africa's most vulnerable ecosystems.

[Learn More](#)

ONEPlanET Participated in the LEAP-RE WEF Nexus Event | Brussels – October 2025

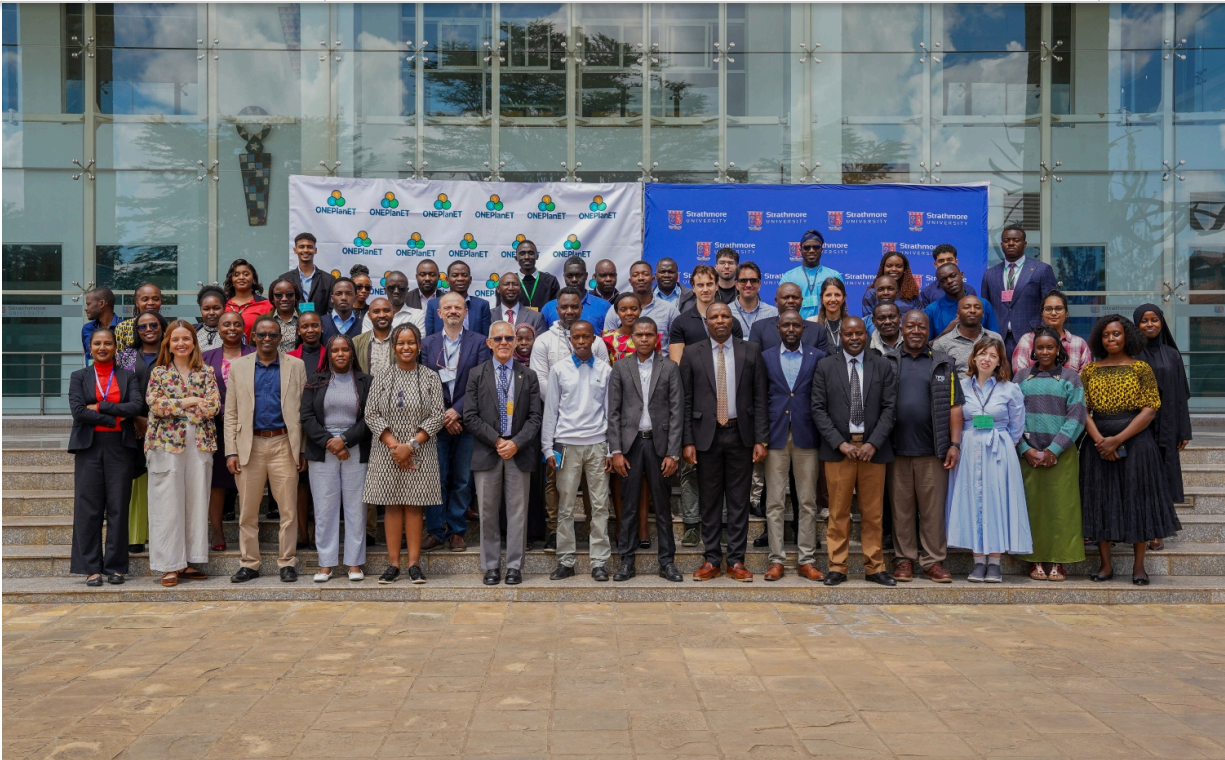


On 22 October 2025, ONEPlanET joined leading institutions in Brussels for the LEAP-RE WEF Nexus event. Representatives from The Cyprus Institute and RINA contributed to a high-level dialogue on shifting from traditional sectoral models to a more integrated, holistic approach for Africa's development.

The discussion centered on scaling resilient WEF innovations and identifying strategies to sustain long-term impact within African contexts. Alongside partners like PRIMA, ENERGICA, and Strathmore University, ONEPlanET helped shape the strategies that will align resource management with both social equity and planetary health.

[Learn More](#)

ONEPlanET Final Event - Nairobi, Kenya – March 2026



As part of our ongoing commitment to co-creation, capacity building, and knowledge exchange, ONEPlanET brought together key actors from across the Water-Energy-Food (WEF) Nexus for our Final Event. This milestone gathering featured a series of targeted activities designed to deepen collaboration, test our digital tools in real-world contexts, and further align innovation with sustainability goals across Africa and Europe.

The project successfully developed the ONEsim and ONEplay toolkits, focusing on three vital African case studies: Inkomati-Usuthu (South Africa), Songwe (Tanzania & Malawi), and Bani (West Africa). Through collaborative simulation and data-driven insights, ONEPlanET helped regions navigate the complex "Nexus" of water, energy, and food systems.

[Learn More](#)

Release of the research publication from ONEPlanET: Rethinking economics in WEF Nexus Models:

RESEARCH PAPER

Economic Representation In Water–Energy–Food Nexus Models: A Systematic Review Of System Dynamics Approaches

Authors:

Pedro Solano-Pereira, Ana
García-González, Luis Javier
Miguel González

Read Here

[Bit.Ly/1PlanET_R1](https://bit.ly/1PlanET_R1)[Bit.Ly/1PlanET_R2](https://bit.ly/1PlanET_R2)

How do we model the complex relationships between water, energy, food, and the economy that drives their demand?

In a newly published research paper, Pedro Solano Pereira Serra, Ana García-González, Luis Javier, and Miguel González take a deep dive into 36 studies using System Dynamics to model the Water–Energy–Food (WEF) Nexus.

Their findings reveal a persistent gap: while many models include economic variables, few treat the economy as a dynamic, interdependent system.

[Read More Here](#)

ONEPlanET feature in CORDIS Article: Multi-sector Models for Africa's Green future

[Subscribe](#)[Past Issues](#)[Translate ▼](#)

Article

Multi-Sector Models For Africa's Green Future

ONEPlanET Was Featured In The Recently Published CORDIS Article



[Read Article Here](#)
[Bit.Ly/1P-Article-2](https://bit.ly/1P-Article-2)

Africa's green transition is not only a shift in energy sources. It is a rethinking of how systems work together for people and planet.

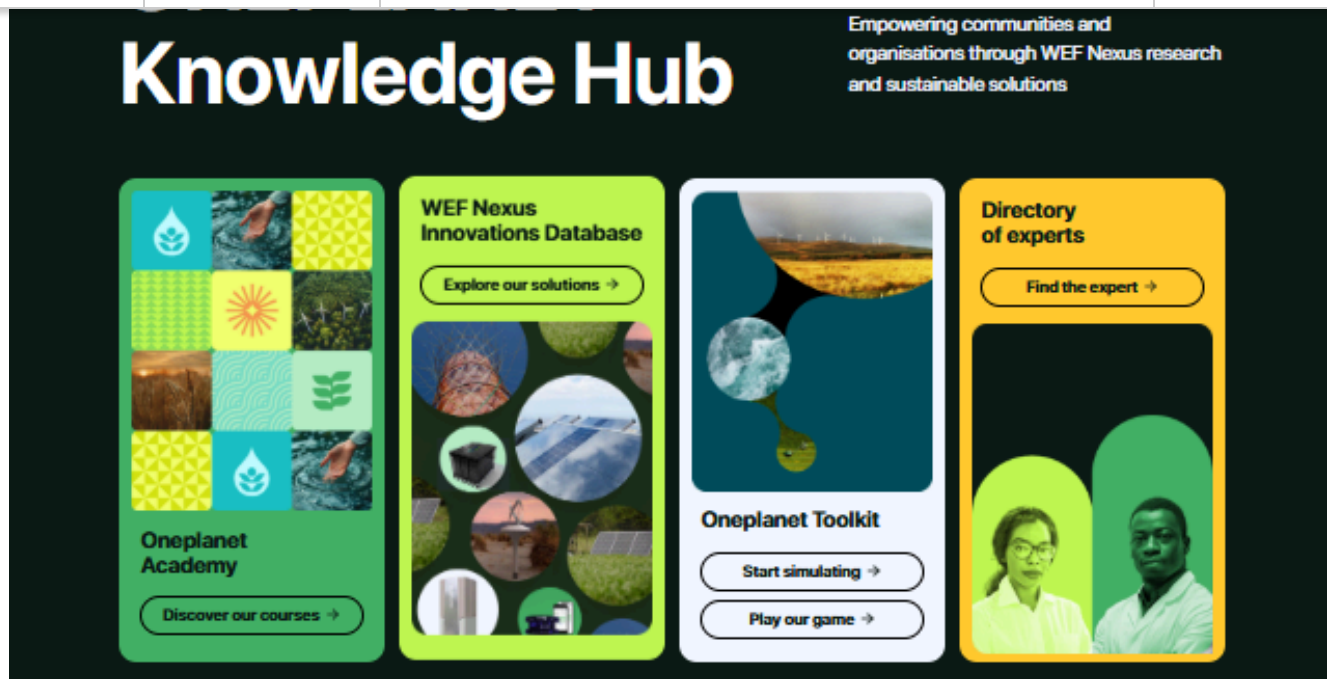
We're pleased to share that ONEPlanET was featured by CORDIS, the European Commission's research results platform, in recognition of our integrated approach to sustainable development in Africa.

At the heart of our work is the Water-Energy-Food (WEF) Nexus, a framework that goes beyond sector-specific fixes. We are building tools and models that reflect the interdependence of resources, economies, and communities.

Explore the full CORDIS feature.

[Explore the CORDIS Feature here](#)

Inside the ONEPlanET Knowledge Hub: [ONESim](#) and [ONEPlay](#)



The ONEPlanET Knowledge Hub has officially launched its two core interactive tools designed to transform how we navigate the Water–Energy–Food (WEF) Nexus.

- ONESim: A technical simulation tool that allows users to model and compare energy transition scenarios across three African case studies. It is built for evidence-based planning, helping researchers and officials analyze the trade-offs of complex policy pathways.
- ONEPlay: An engaging, gamified platform that makes WEF dynamics accessible. By exploring "what-if" scenarios through gameplay, users can visualize the immediate impacts of policy decisions on resource systems.

Together, these tools bridge the gap between data and action, fostering informed dialogue and smarter governance for Africa's sustainable future.

[Visit the Knowledge Hub today](#)

Complete the ONEPlanET engagement survey

As we approach the closeout of the ONEPLANET project, we kindly invite you to complete a short survey (2–5 minutes) to share your feedback on the stakeholder engagement activities conducted over the past months, including webinars, workshops, and related events.

ONEPLANET is a people-centered initiative, and your input is invaluable in helping us assess the effectiveness of these engagements, understand their impact, and inform the design of future initiatives.

[Subscribe](#)

[Past Issues](#)

[Translate](#) ▼

[Fill the survey here](#)



The project has received funding from the European Union, grant agreement number 101084127.



Copyright (C) 2026 AfriLabs. All rights reserved.

Our mailing address is:

Want to change how you receive these emails?
You can [update your preferences](#) or [unsubscribe](#)