

[view in browser](#)

Welcome to the 3rd Edition of the ONEPlanET Newsletter!



Dear <<First Name>>

Over the last six months, the [ONEPlanET](#) partners have achieved significant milestones as we work to support sustainable energy and resource management across Africa. From our General Assembly in Paris to insightful webinars, workshops, and case study updates, our community of partners and stakeholders has collaborated to drive real change in the Water-Energy-Food Nexus.

Major achievements include the development of the “Open Innovation Database” under the project’s Knowledge Hub and the significant strides in advancing the energy modelling.

The project partners also hosted two webinars and two workshops to further engage with the different stakeholders and gather feedback on the models being developed to support a sustainable resource management framework for Africa.

To further disseminate key learnings, we had the opportunity to represent ONEPlanET at three international events and introduce African youth to resource management challenges during the Winter School hosted in South Africa.

In this edition, you’ll get a closer look at these developments, learn about our innovative tools, and see how we’re building a sustainable energy future in Africa and beyond.

The ONEPlanET General Assembly | September - Paris, France



[Subscribe](#)[Past Issues](#)[Translate ▼](#)

WEF Nexus in-person Advanced School held at Future Africa, Pretoria, from 13-17 August 2024.

This capacity-building initiative aimed to equip and support early-career researchers, postgraduate students, managers, and practitioners from Southern Africa, East Africa, West Africa, and Malaysia in understanding WEF nexus thinking. Participants learned about the WEF Nexus and its concepts and how to facilitate discourse and apply new frameworks, tools and methods for analyzing these complex WEF nexus interdependencies.

[READ MORE](#)

Building momentum: A look at ONEPlanET's latest advances

ONEPlanET's Open Innovation Database: A Game-Changer for Water-Energy-Food Sustainability

The ONEPlanET project is making significant strides with the development of the Open Innovation Database, a growing repository of accessible, frugal, and impactful solutions applicable to and suitable for Water-Energy-Food (WEF) Nexus transition challenges. This initiative aims to explore and evaluate innovations capable of addressing critical sustainability needs, especially in economically disadvantaged regions. By leveraging both software and hardware, the database is poised to become a valuable tool for sustainable development under the WEF nexus paradigm.

[READ MORE](#)

ONEPlanET Advances Water, Energy, Food, and Socio-Economic Modelling

Within the framework of ONEPlanET, significant progress has been made in the development of the Water, Energy, Food, and Socio-economic modules led by ONEPlanET partners from University of Valladolid. During the recent General Assembly in Paris, African and European team members discussed integration plans for these modules, focusing on their successful integration.

[READ MORE](#)

ILLuminating ONEPlanET's activities on WEF Nexus: Recap from stakeholder engagement webinars and workshop

perspectives from 4 sister projects | September - Hybrid (Paris, France)



As part of our ongoing discussions on sustainable energy transitions in Africa, a recent hybrid workshop explored innovative energy modeling approaches from the four sister projects ([ONEPlanET](#), [EMERGE](#), [EPIC AFRICA](#) & [RE-INTEGRATE](#)) that support practical, data-driven policies. Hosted at the ONEPlanET General Assembly as a hybrid event, the event highlighted the importance of models that reflect Africa's unique socio-cultural and economic landscapes, ensuring that transition strategies are not only theoretically sound but actionable and locally relevant.

READ MORE

ONEPlanET: A Novel Contribution to WEF Modelling | September - Virtual

HOW TO MODEL THE WEF NEXUS?

Integrated Assessment Models (IAMs) IAMs are often used in assessing and guiding policies aimed at addressing climate change (IPCC).

Flowchart: Policies → SCENARIOS → IAM (food, energy, water) → RESULTS (Goals reached? Successful policy recommendations)

Source: Own elaboration based on Capellán (2023)

This project has been funded by the European Union, Grant Agreement n. 101084127

Participants: Laura Uva, faajlop, Sara and Pedro (UvA), serena scotton

At a recent webinar, the team shared insights into the project's progress and innovative modeling approach to address Africa's energy, water, and food (WEF) challenges. The focus is on creating a comprehensive toolkit that simulates resource scenarios to inform local policies, taking into account socio-economic and environmental conditions. Three African river basin case studies—Bani in Mali, Songwe in Malawi and Tanzania, and Inkomati in South Africa—are driving these

[READ MORE](#)

Collaborating for Change: Unpacking the WEF Nexus through Landscape and Regime Lenses | August - Virtual

today we will map these findings (an more) into the Status-Quo and X-Curve canvas

ENVIRONMENTAL FACTORS AND TRENDS

ECONOMIC TRENDS AND FACTORS

STATUS-QUO

REGULATIONS

TECHNOLOGY

USER VALUES

INSTITUTIONS

SOCIAL TRENDS AND FACTORS

INNOVATION INITIATIVES

Optimisation

Destabilisation

Chaos

Stabilisation

Institutionalisation

BREAKDOWN

Phase out

Emergence

Acceleration

Experimentation

ONEPlanET

Fabio Maria Montagna

The project has received funding from the European Union, grant agreement number 101084127.

In our recent online WEF innovation workshop titled **“Collaborating for Change: Unpacking the WEF Nexus through Landscape and Regime Lenses”**, we introduced participants to the core principles of socio-technical systems theory and explored its relevance to sustainable transformation. This framework is essential for understanding complex, interconnected sectors like water, energy, and food. By examining the relationships within and across these systems, we gain insights into the challenges and opportunities for driving meaningful change.

[READ MORE](#)

Webinar on ONEPlanET Case Study Areas | July - Virtual

Subscribe

Past Issues

Translate ▼

Approximately 52,000 people live in the floodplain and suffer from flooding and land loss.

- 30%–50% lacking access to a safe water supply.
- The SRB experiences electricity shortages. ~ 75% do not have access to electricity.
- In the basin, the rapid population growth has contributed to the degradation of the environment.
- Songwe River Basin Commission, jointly developed by the Governments of both countries, aims to reduce poverty, improve human health and livelihoods, ensure water, food, and energy security, mitigate floods, and enhance sustainable river basin management.

This project has been funded by the European Union, Grant Agreement n. 101084127

Participants: Peter, serena scotton, Tsitsi Bangira..., Jennifer Krue..., Abdoulaye B..., Wece Robins..., Siddhartha's..., Fireflies.ai No..., ble yatanan, mbasutli, Imma, read.ai meeti..., Nicolò Stevan..., Natalie Kafan...

This webinar titled **“Innovative Approaches to sustainable Water-Energy-Food (WEF) Nexus management in Africa: Insights from ONEPlanET Case Study Areas”**, presented findings from three representative case studies: the **Songwe River Basin** (Malawi/Tanzania), **Inkomati-Usothu** (South Africa), and **Bani River Basin** (Mali). These case studies highlight diverse basin types, climate conditions, and socio-ecological systems, providing valuable insights into the complexities of WEF Nexus management. This diversity is crucial to the project’s co-creation process, making it essential to deeply understand local needs and challenges to develop user-centered educational materials and policy recommendations. This webinar focused on disseminating the findings and methodologies of the ONEPlanET project, enhancing the visibility and impact of sustainable water, energy, and food nexus management across diverse ecological systems in Africa.

[READ MORE](#)

Spotlight on ONEPlanET at a Global Stage

Through our consortium members, ONEPlanET has participated in several thematically aligned events on Water, Energy, and Food modelling to amplify the project’s mission of empowering Africa’s energy transition and promoting sustainable resource management. Each event advances our commitment to delivering actionable insights, bridging regional and international stakeholders, and fostering a shared vision for a resilient and resource-efficient future.

ONEPlanET at the LEAP-RE forum 2024 | October - Hybrid (Milan, Italy)

[Subscribe](#)[Past Issues](#)[Translate ▼](#)

engaged in a panel discussion on Energy Systems and Modelling with Consideration to the Water-Energy-Food Nexus. This session highlighted how the innovative ONEPlanET WEF Nexus models are driving Africa's energy transition and addressing complex sustainability challenges.

ONEPlanET Participates in Launch of the Mediterranean WEF Nexus Community of Practice | September - Larnaca, Cyprus



ONEPlanET, represented by Cyprus Institute, was honored to participate in the recent launch of the Mediterranean WEF Nexus Community of Practice (NCoP), held at the Golden Bay Hotel in Larnaca, Cyprus. This significant event, organized by The Cyprus Institute, marks a milestone in advancing sustainable resource management across the Mediterranean region, bringing together leaders from science, policy, and practice.

ONEPlanET at the 79th ATI Annual Congress 2024 | September - Genoa, Italy



ONEPlanET recently presented a significant research paper at the 79th ATI Annual Congress held from September 4th to 6th, 2024, in Genoa, Italy.

The study explored the feasibility of green hydrogen production in Africa, emphasizing the utilization of abundant renewable energy sources, particularly solar power.

This presentation contributes valuable insights into the future of green hydrogen production and its role in Africa's energy landscape.

[READ MORE](#)

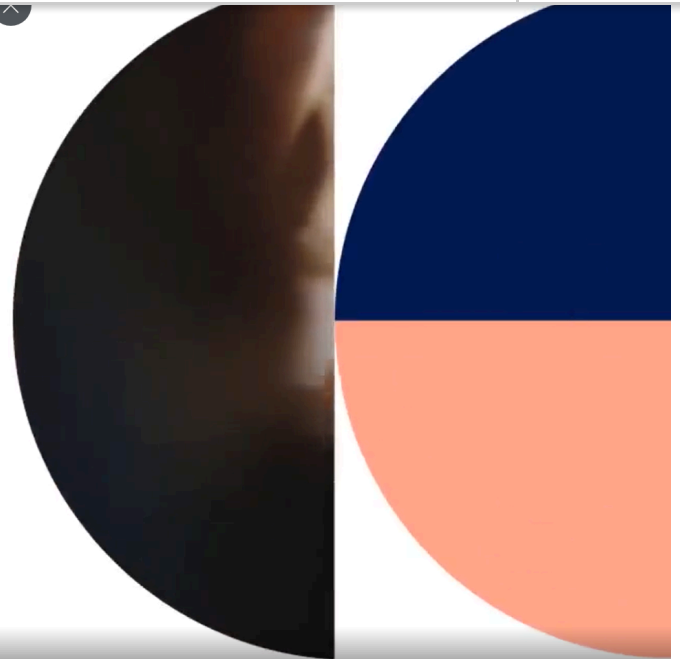
Podcasts & Articles

[Dive into the Future of Sustainable Energy in Africa | Podcast](#)

[Subscribe](#)[Past Issues](#)[Translate](#) ▼

WEF Nexus Podcast

Episode: The One Planet Project



Check out our latest episode: "Unlocking Sustainable Energy in Africa: Insights from the ONEPlanET Project with Tsitsi Bangira and Peter Odhiambo".

Join hosts Anne Chisa and Rewa Assi as they chat with Dr. Tsitsi Bangira, a remote sensing scientist, and Peter Odhiambo, a law and policy research advisor, to delve into the groundbreaking ONEPlanET Project and its potential to transform Africa's energy landscape.

Don't miss this insightful conversation on sustainable energy solutions and their impact on Africa's future!

[Listen Now](#)

Upcoming Events & Calls

[Join Our Stakeholder Community in the Water, Energy, and Food Sectors!](#)

Calling on Water-Energy-Food (WEF) Experts

Are you a professional with specialized knowledge and extensive experience in the areas of water management, energy systems, or food security?

 Register:
<https://tinyurl.com/WEFExpert>

Application Deadline: **30th November, 2024**

Are you an organization or individual working within the Water, Energy, or Food (WEF) sectors? We are thrilled to invite you to join our stakeholder community! This is a unique opportunity to connect with professionals, researchers, policymakers, investors, and innovators dedicated to advancing sustainable resource management through the WEF Nexus.

By joining, you'll become part of a dynamic network focused on collaborative solutions, knowledge sharing, and impactful discussions. Together, we can drive initiatives that make a real difference in creating resilient, inclusive, and sustainable systems across Africa and beyond.

Get Involved – Your Expertise Matters!

If you're passionate about WEF sustainability, we encourage you to join us and be part of a movement that's shaping the future of integrated resource management.

[Register here](#)

Webinar on Gender Perspectives in the WEF Nexus

This insightful webinar delves into the often-overlooked yet essential role women play in balancing the complex relationship between water, energy, and food (WEF) resources across Africa. Though they are key contributors in managing these interconnected systems, women frequently face barriers such as unequal access to land, water, and energy which limit their influence in decision-making and reduce the overall efficiency of resource management.

[Subscribe](#)[Past Issues](#)[Translate](#) ▼

considerations can drive meaningful change, ensuring that WEF initiatives not only succeed locally but also promote inclusive, sustainable development for all.

[Register now!](#)



The project has received funding from the European Union, grant agreement number 101084127.



Copyright (C) 2024 AfriLabs. All rights reserved.

Our mailing address is:

Want to change how you receive these emails?
You can [update your preferences](#) or [unsubscribe](#)